



250 MW Wind Farm Site at Tirupur – Tamil Nadu



GoWind-n-Sun EnerTechCon India Pvt. Ltd.

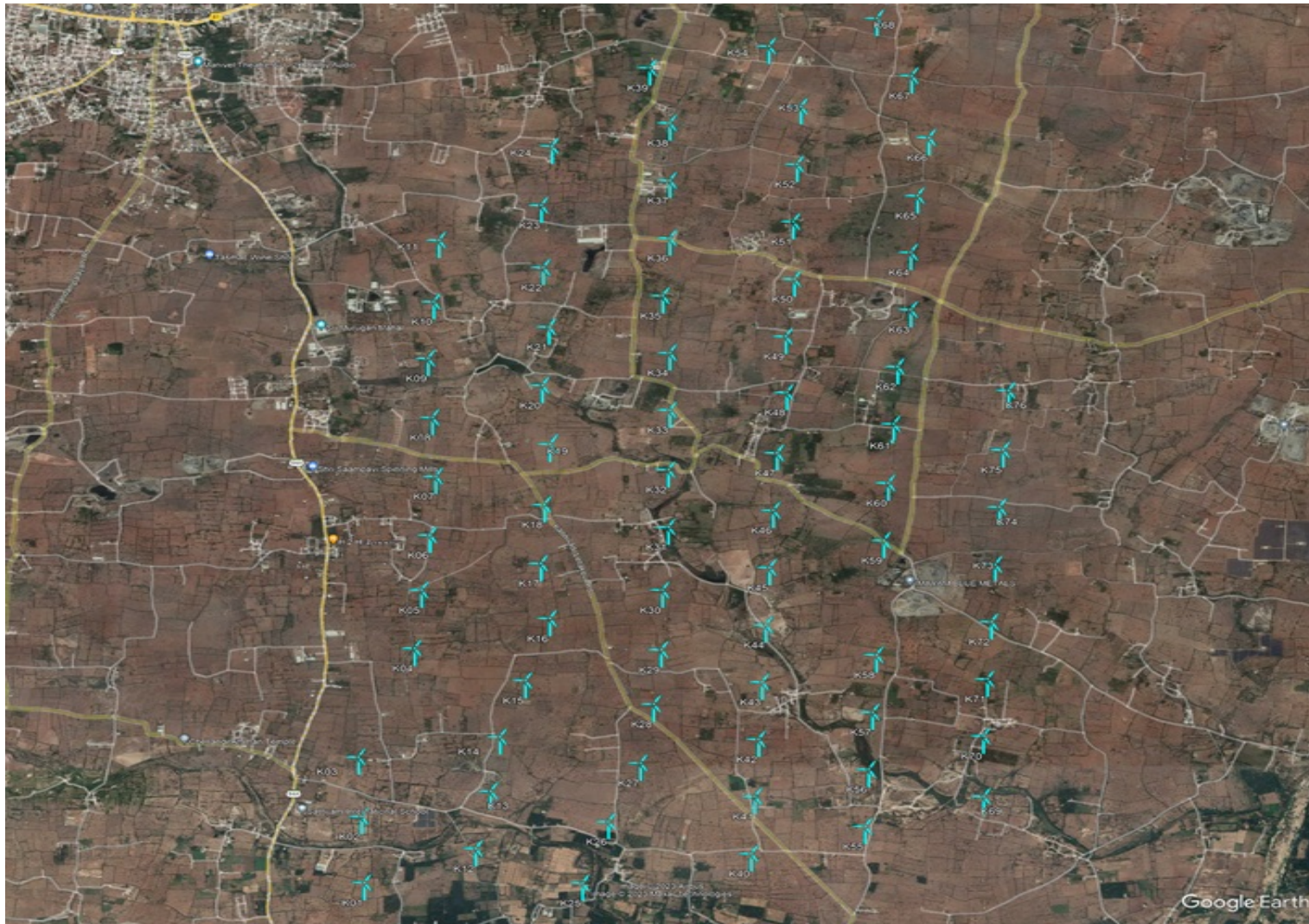
Details

- Project Capacity : 250MW
- Location State : Tamil Nadu
- Type of Land : Private
- Land Acquisition : Whole right purchase or Lease
- Business model : Wind Tariff Auction for Intra State sale of Power
- Metering : Exclusive sub-station and metering

Wind Farm details

- Location : Tirupur District
- Nearest Airport : Coimbatore International Airport at 160km by road
- Highway connectivity: Tamil Nadu State highway 81
- No. of proposed WTG: 76(Suitable for 250MW)
locations
- Suitable turbine model: Envision, EN156,3.3MW
- Clearance between WTGs: 3D & 5D
- Terrain type: Plain, Simple and Agricultural

WTG Layout

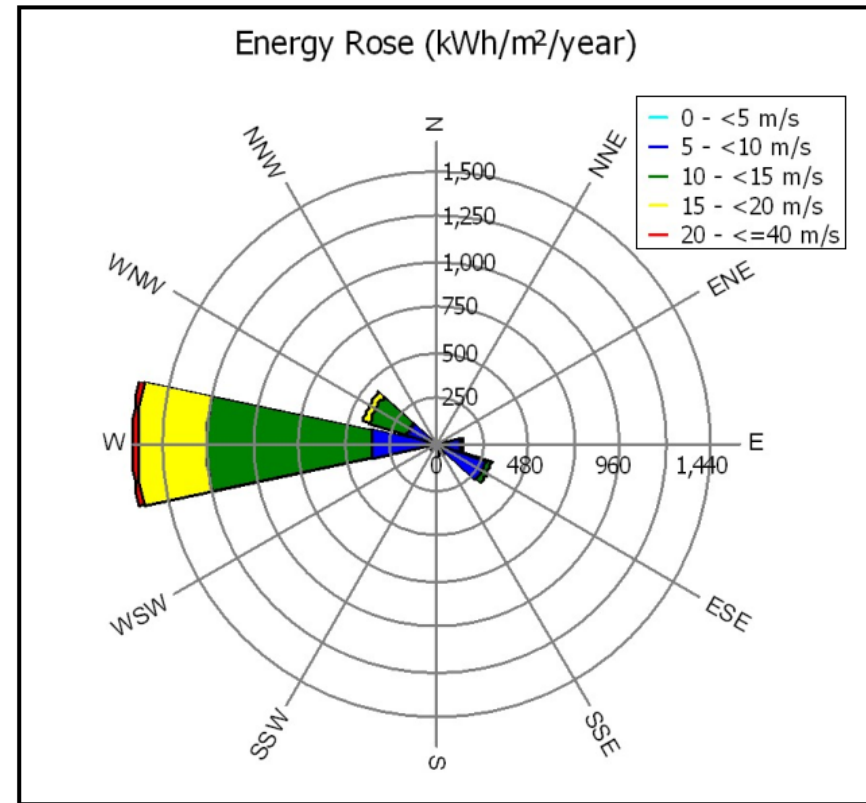
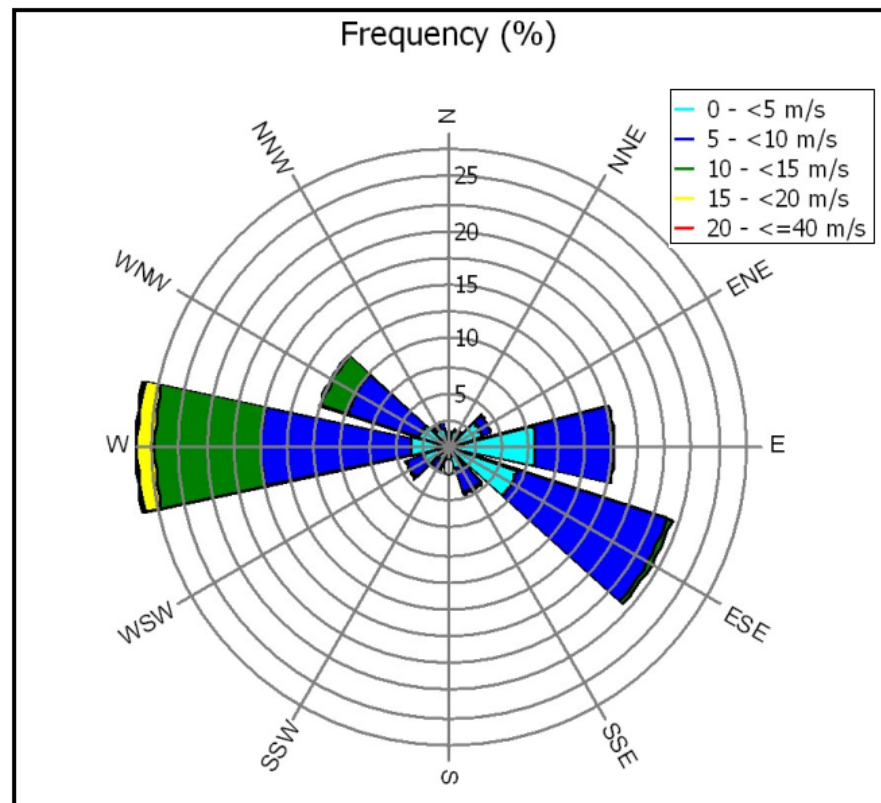


Wind Resource Assessment

- NIWE measured wind using 100 m meteorological mast installed with three sensor levels of 100m, 80m and 50m, located at a 45km distance from the proposed Windfarm.

Wind Mast	Measured height	Duration of measurement	Annual Wind Speed at measured height (100m)	Annual Wind Speed at hub height (140m)	Predominant wind direction
NIWE	100m	3 years	6.03 m/s	6.96 m/s	West

Wind Rose



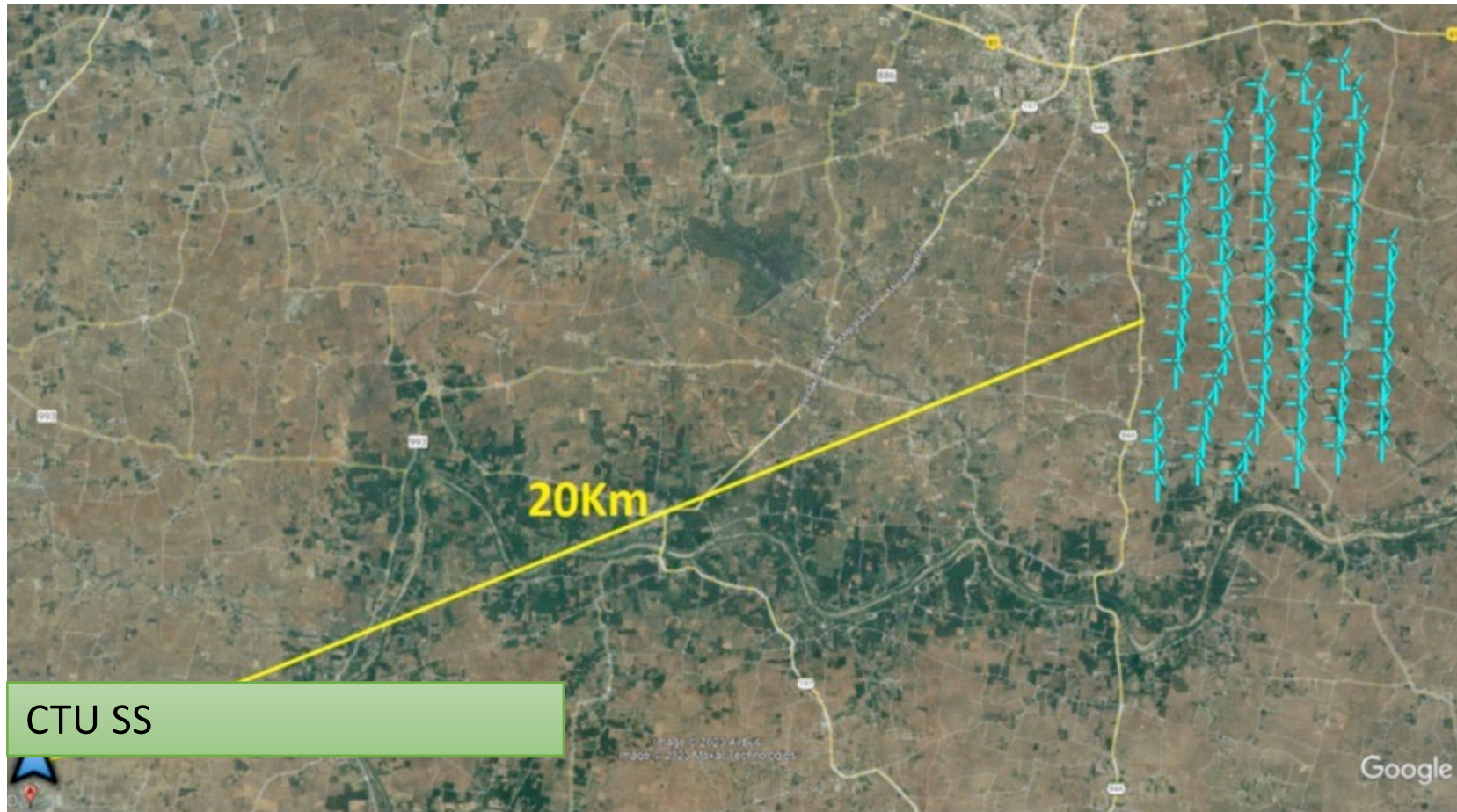
Annual Energy Production

Description	Total Wind farm	Per Turbine
Rated Power [MW]	250.8	3.3
Gross Generation [GWh]	1028.688	13.535
GCF	46.82%	46.82%
P50 [GWh]	742.394	9.768
P50 [NCF]	33.79%	33.79%
P75 [GWh]	698.830	9.195
P75 [NCF]	31.81%	31.81%
P90 [GWh]	659.621	8.679
P90 [NCF]	30.02%	30.02%

Power Evacuation

- Pooling Sub station: 33KV/220KV-250MVA
- Proposed Transformers: 125MVA Two Nos.
- Connectivity SS: CTU 220KV-300 MW Evacuation available
- Distance between Pooling SS: 20 km and CTU SS
- Internal wind farm line: 33KV line with concrete poles
- External HT line: 220KV line with HT lattice steel structures

Wind farm and PGCIL SS Location





GoWind-n-Sun EnerTechCon India Pvt. Ltd.

<https://gowindsun.com>

+91 91585 67110